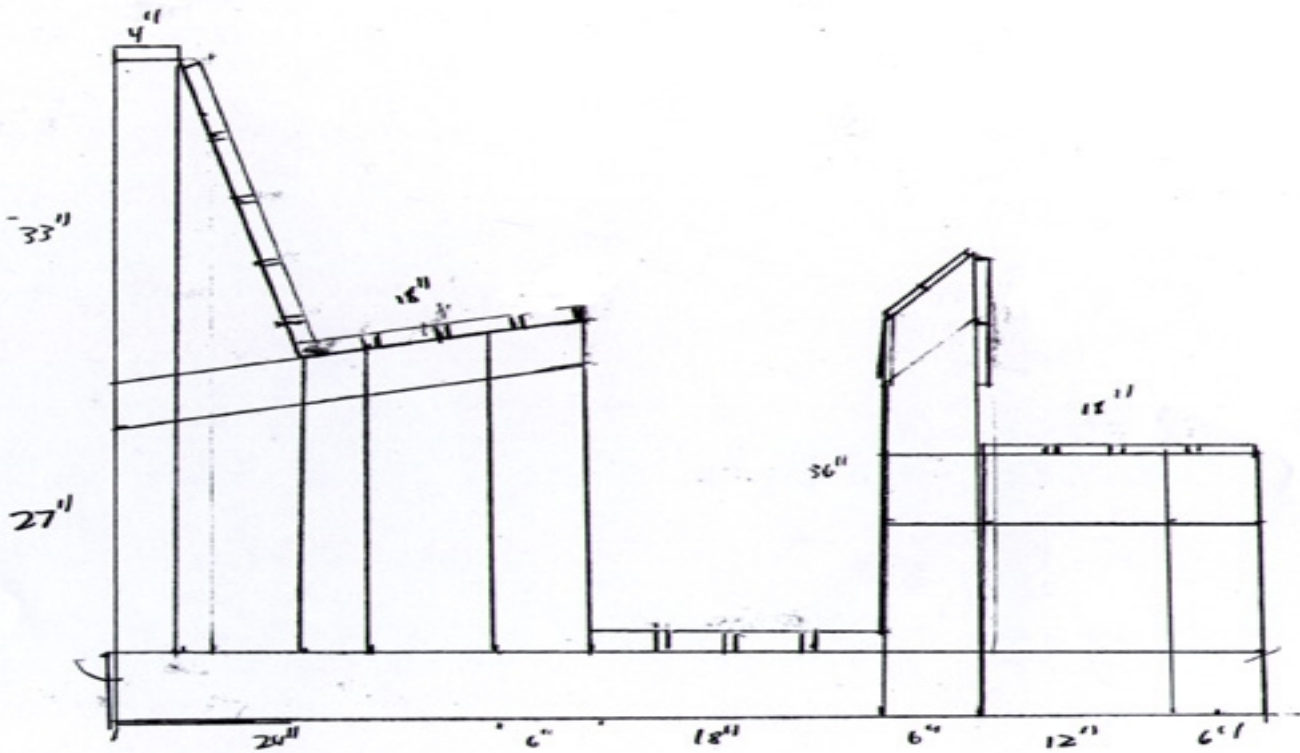


Bench Design 3



Points to Remember:

- Nuts and bolts should be used for all connecting joints.
- Non-pressure treated wood is recommended.
- Benches may not be secured to surrounding trees, bushes, etc.
- Approval must be given from the Office of Student Development before construction can begin. Contact Stephen Bryan at sbryan@duke.edu (684-6313).
- For the complete bench policy, refer to the *Bulletin of Information and Regulations*.